



# ZONING MAP

## Town of Guilford

State of Connecticut

Effective Date : October 7, 2023

Approved By : Planning and Zoning Commission

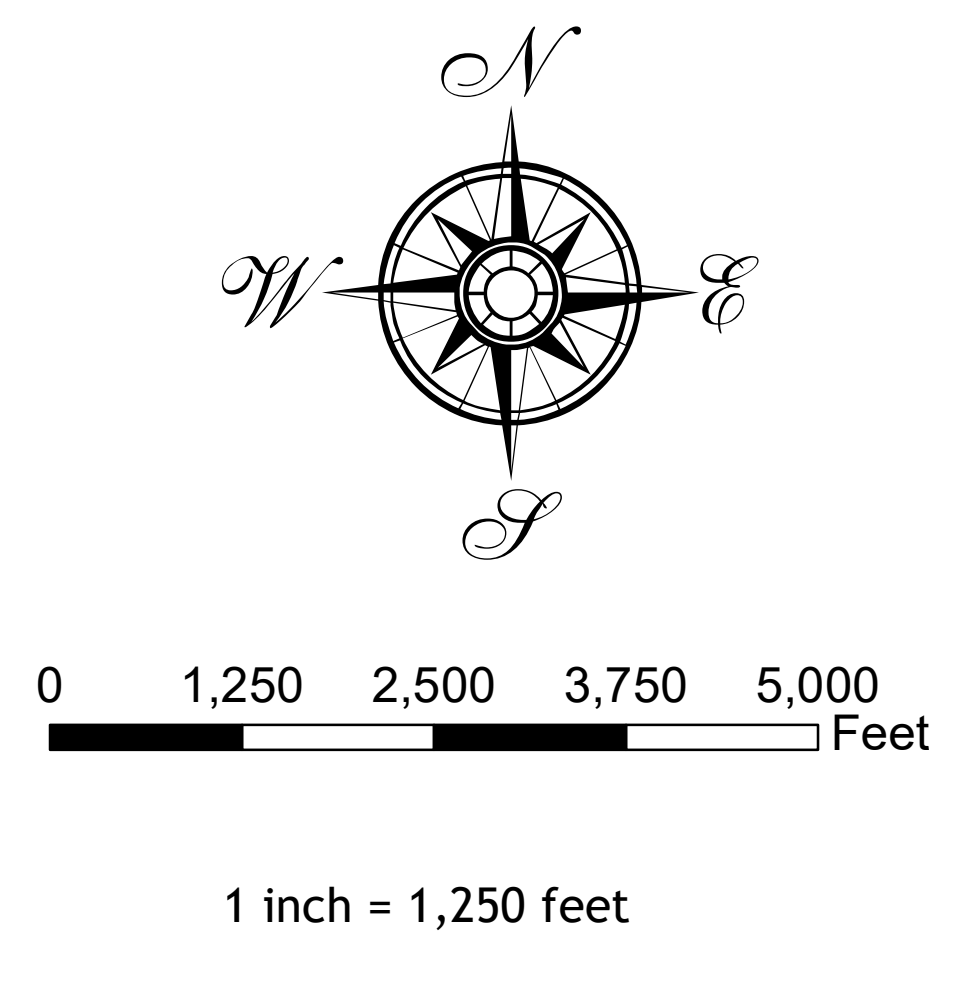
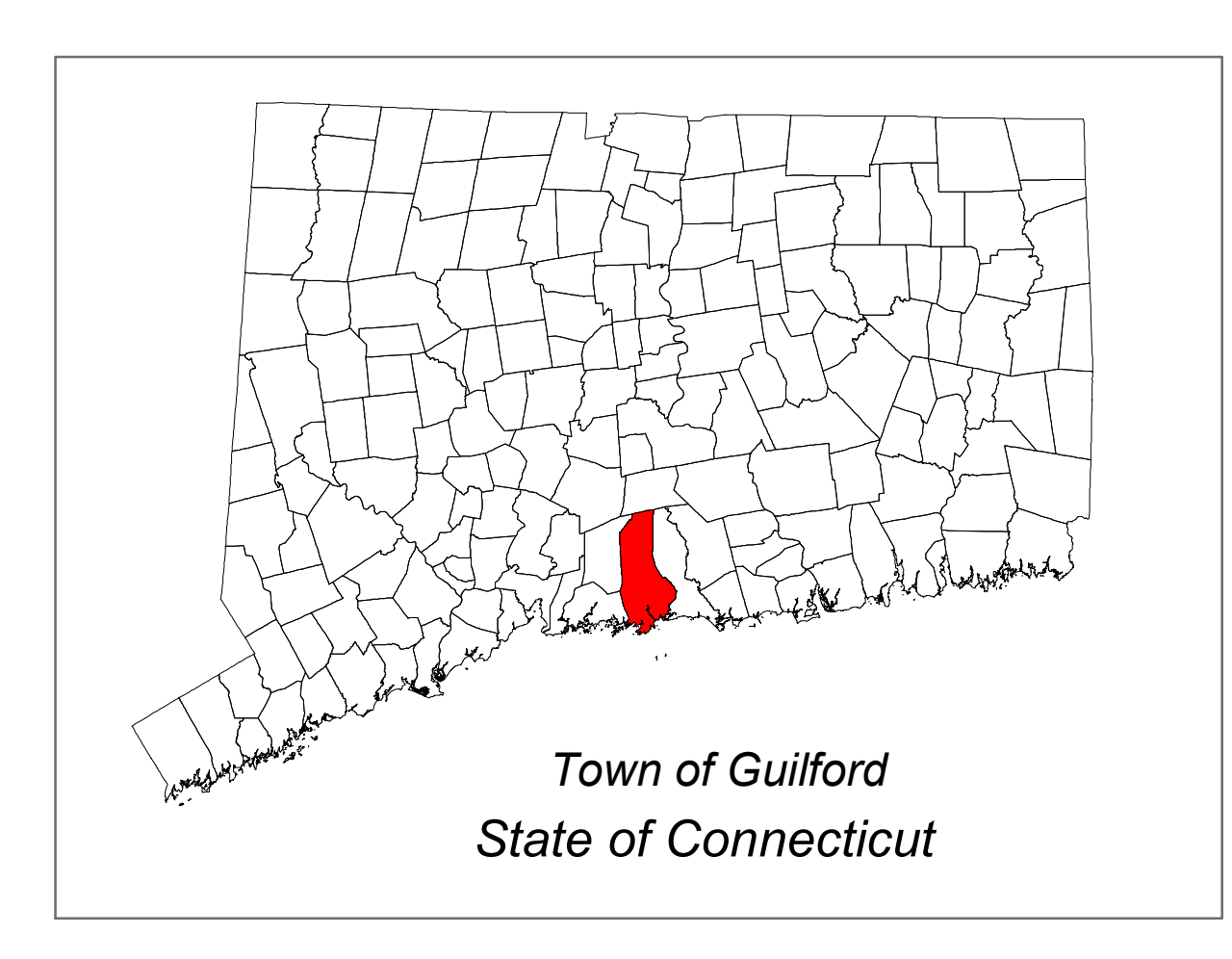
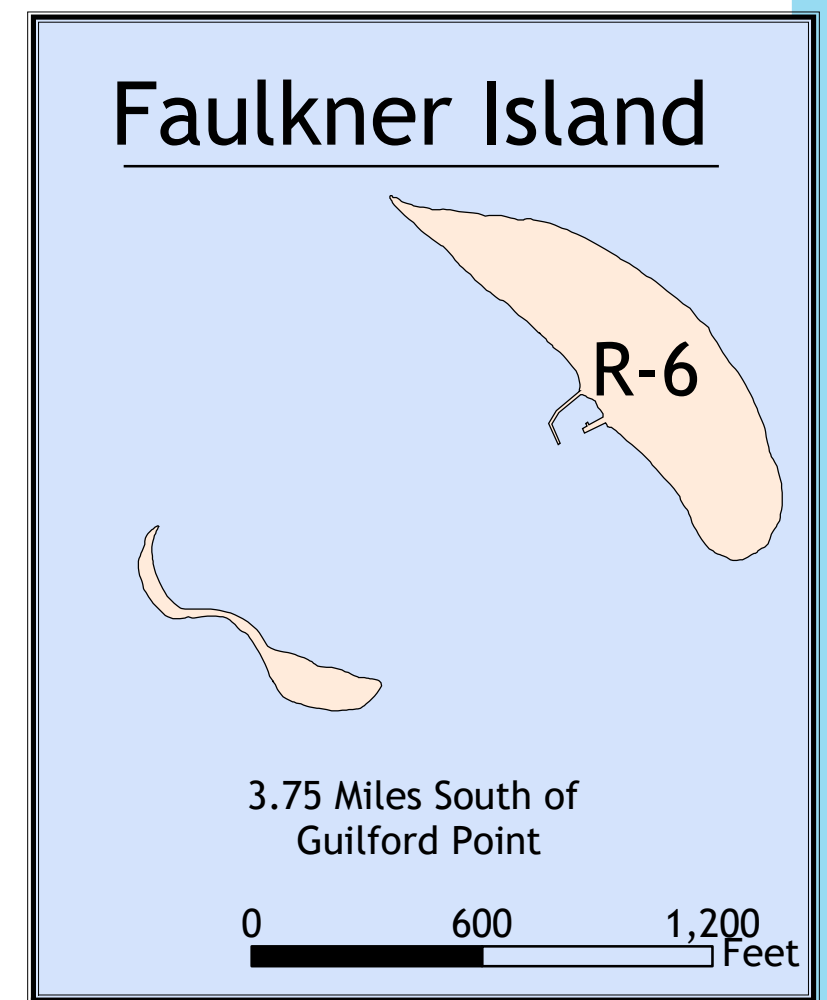
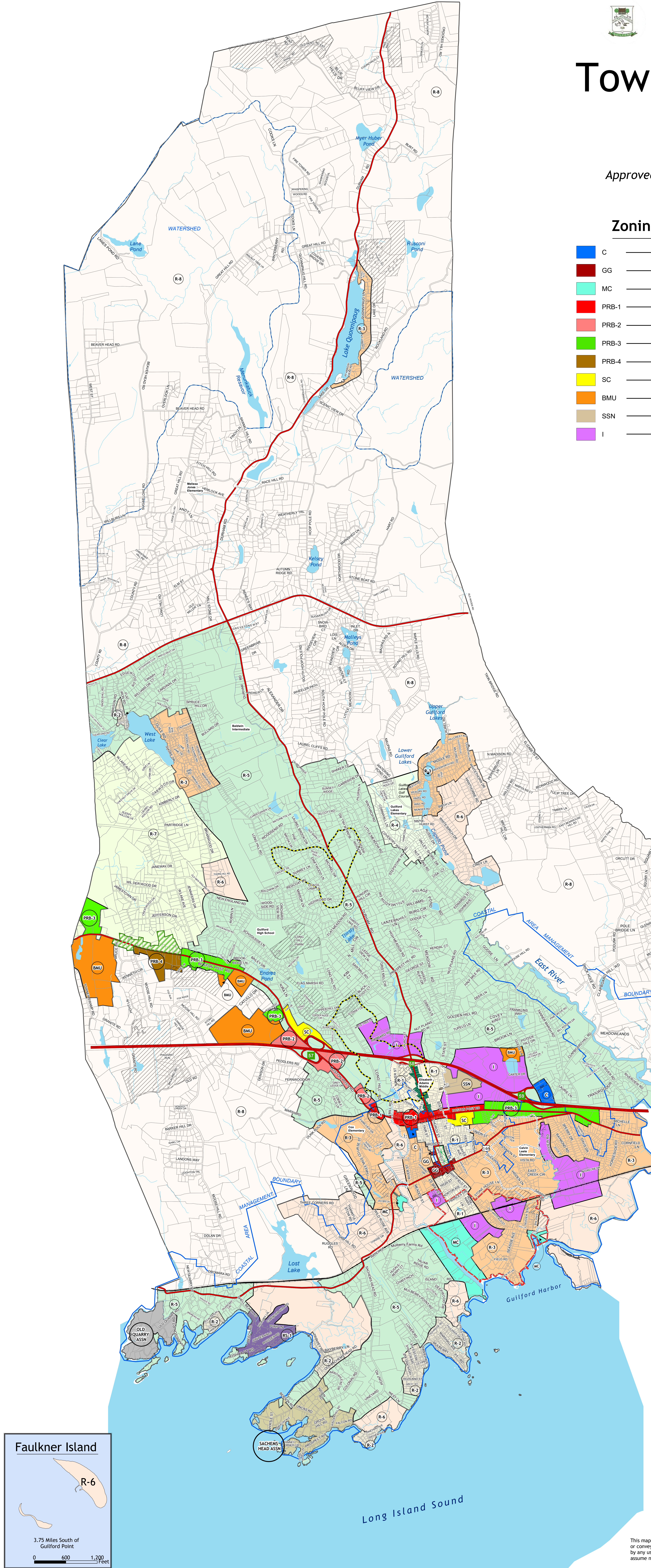
### Zoning Legend and Classifications

	C	Commercial		R-1
	GG	Guilford Green		R-2
	MC	Marine Commercial		R-3
	PRB-1	Post Road Business 1		R-4
	PRB-2	Post Road Business 2		R-5
	PRB-3	Post Road Business 3		R-6
	PRB-4	Post Road Business 4		R-7
	SC	Shopping Center		R-8
	BMU	Business Mixed Use		RS-1
	SSN	State Street North District		SACHEMS HEAD ASSN
	I	Industrial		OLD QUARRY ASSN

Residential

### Legend

- Coastal Area Management Boundary
- Watershed
- Aquifer Protection Overlay District
- Parcels
- Guilford Town Center
- Town Green
- Railroad
- Water Features
- Church Street Village District
- PRD District
- Gateway Overlay District
- Town Center South Overlay
- Exit Numbers



This map is for planning purposes only. It is not for legal description or conveyances. All information is subject to verification by any user. The Town of Guilford and its mapping contractors assume no legal responsibility for the information contained herein.



Date: September 2023