




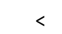


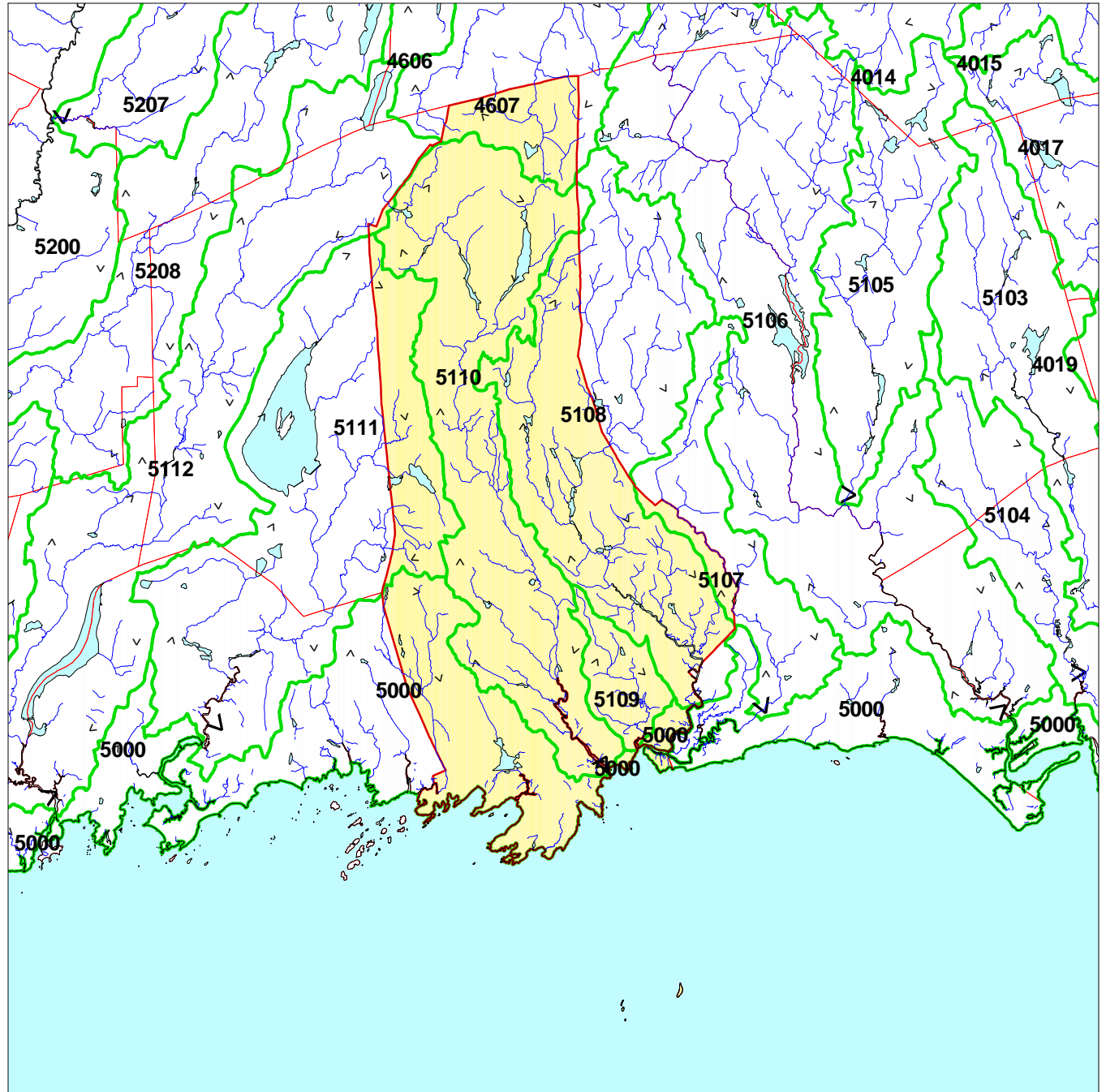
GUILFORD CONNECTICUT SUBREGIONAL BASINS AND SURFACE WATER FLOW DIRECTIONS

Explanation

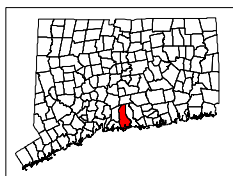
-  Town Boundary
-  Subregional Watershed Boundary
- 4201** Subrg. Basin ID# - as designated by CTDEP
-  Watercourse  Open Water
-  Basin Outlet
-  Surface Water Flow Direction

The table provides statistics for each subregional basin. Shown are the areas of the basin within the town, the percentage for that area, and the percent of the town covered by each basin.

Sbas_no	AcresInTwn	Percofb	Percoftwn
0	14.99	0.0	0.0
4607	1662.95	9.2	5.5
5000	4882.16	12.9	16.1
5107	452.94	10.4	1.5
5108	7502.83	58.5	24.8
5109	1432.77	99.7	4.7
5110	11492.80	99.0	37.9
5111	2778.14	17.8	9.2
5112	74.30	0.5	0.2



Town Area: 30294 Acres



Digital layers provided by the CTDEP.
Map composed by the NEMO project.
For educational purposes only.

