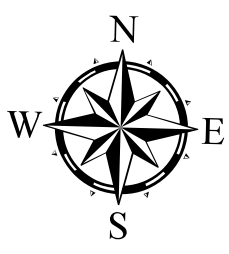
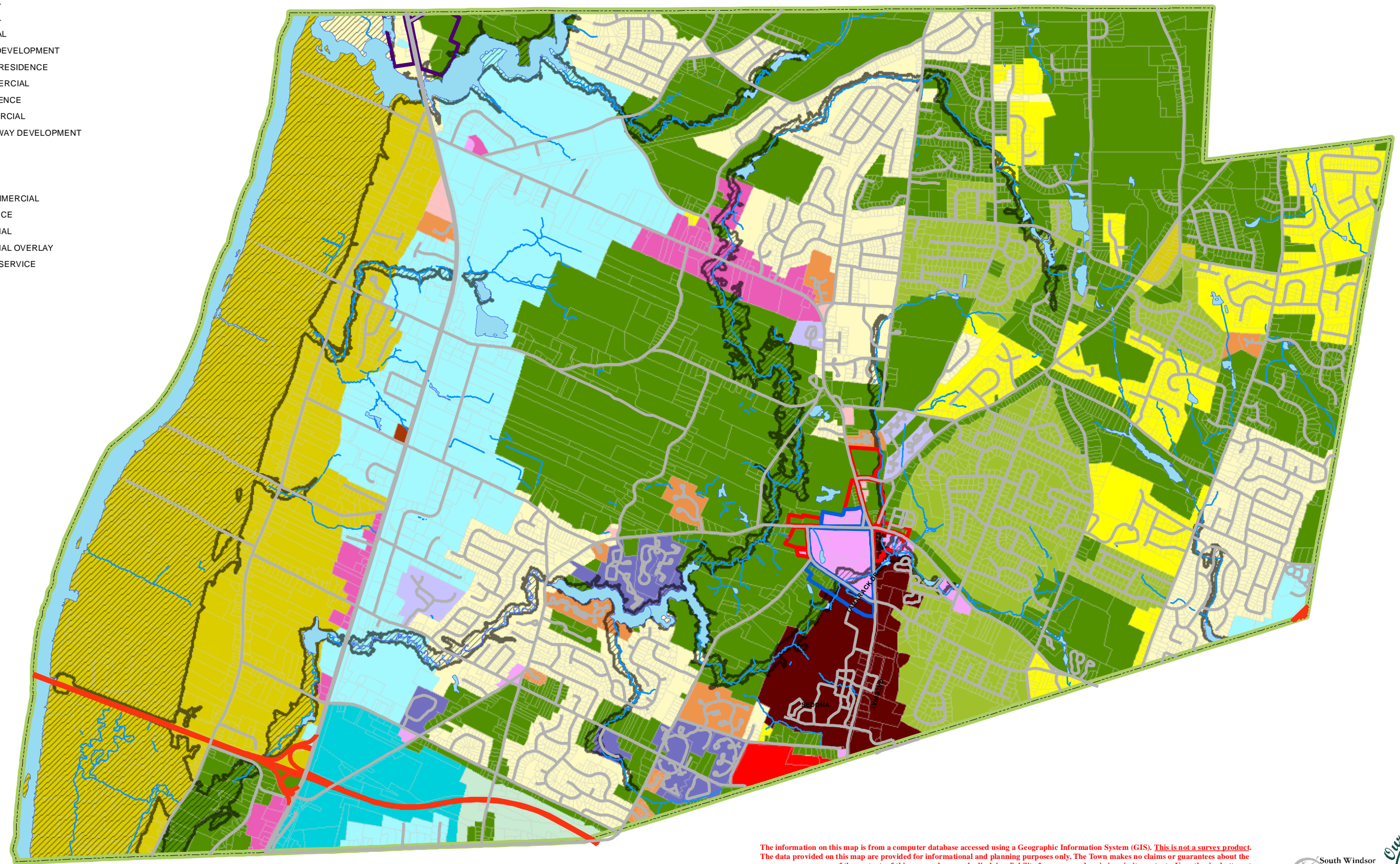


TOWN OF SOUTH WINDSOR, CT ZONING MAP 2022



- CENTER CORE ZONE
- CENTER NORTH ZONE
- RTE 5 NORTH ZONE
- A-FLOOD HAZARD ZONE
- AE-FLOOD HAZARD ZONE
- A-20 RESIDENTIAL
- A-30 RESIDENTIAL
- A-40 RESIDENTIAL
- AA-30 RESIDENTIAL
- I-291 CORRIDOR DEVELOPMENT
- DA-15 DESIGNED RESIDENCE
- DESIGNED COMMERCIAL
- DESIGNED RESIDENCE
- GENERAL COMMERCIAL
- BUCKLAND GATEWAY DEVELOPMENT
- INDUSTRIAL
- MULTI-FAMILY A
- MULTI-FAMILY AA
- RESTRICTED COMMERCIAL
- RESTRICTED OFFICE
- RURAL RESIDENTIAL
- RURAL RESIDENTIAL OVERLAY
- ROUTE 5 TRAVEL SERVICE



The information on this map is from a computer database accessed using a Geographic Information System (GIS). **This is not a survey product.** The data provided on this map are provided for informational and planning purposes only. The Town makes no claims or guarantees about the accuracy or currency of the contents of this map and expressly disclaims liability for errors and omissions in its contents. Unauthorized attempts to modify any information shown on this map or utilize this map for other than its intended purposes are prohibited. Each user of this map is responsible for determining its suitability for his or her intended use or purpose. In no event will the Town of South Windsor be liable for any damages, including loss of data, lost profits, business interruption, loss of business information or other pecuniary loss that might arise from the use of this map or the information it contains.

